



TextielMuseum

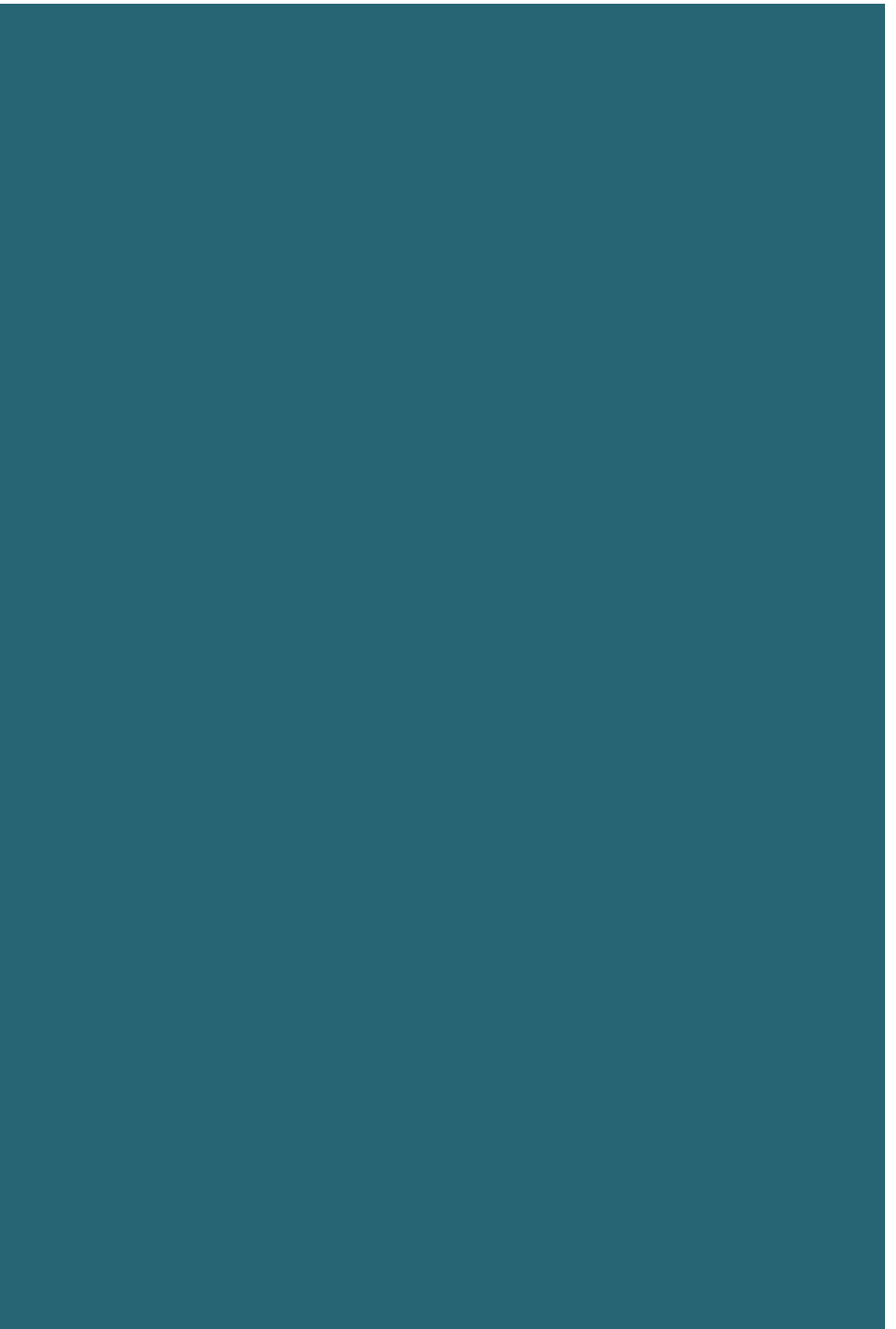
TextielLab

TextielMuseum and TextielLab

an introduction

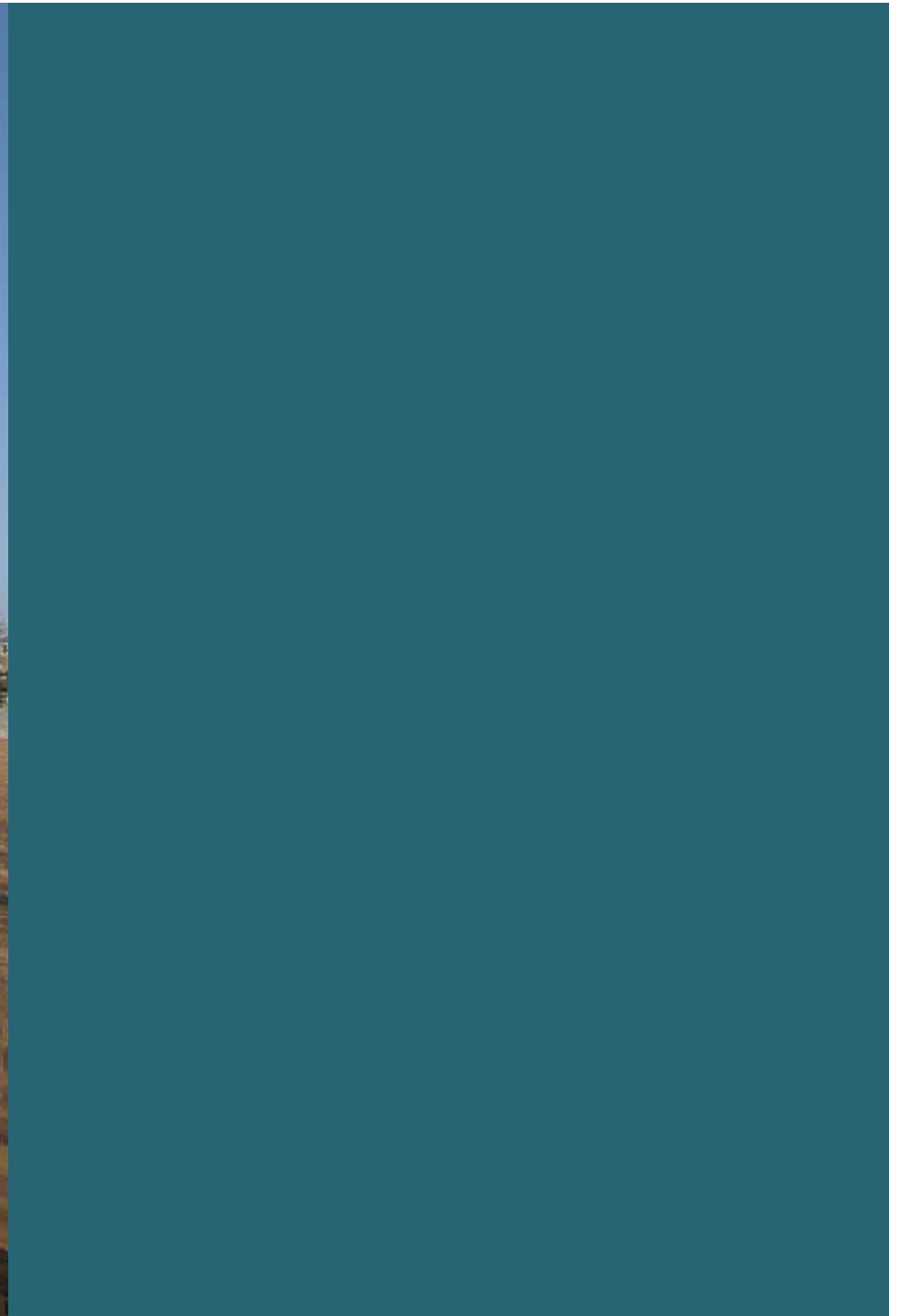
The TextielMuseum is a working museum. It brings inspiring exhibitions in the field of design and art and offers educational programs in a former textile factory.

















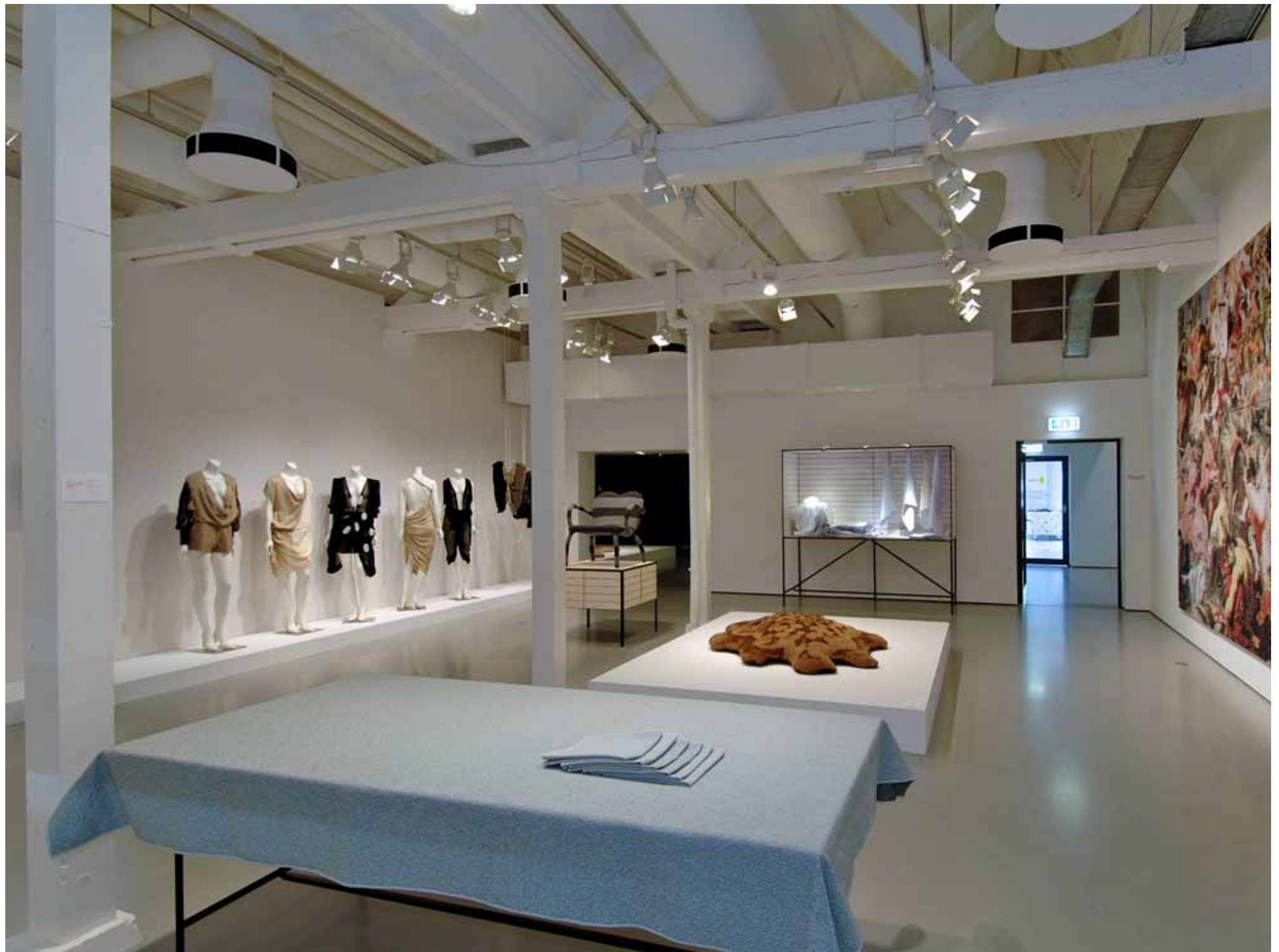




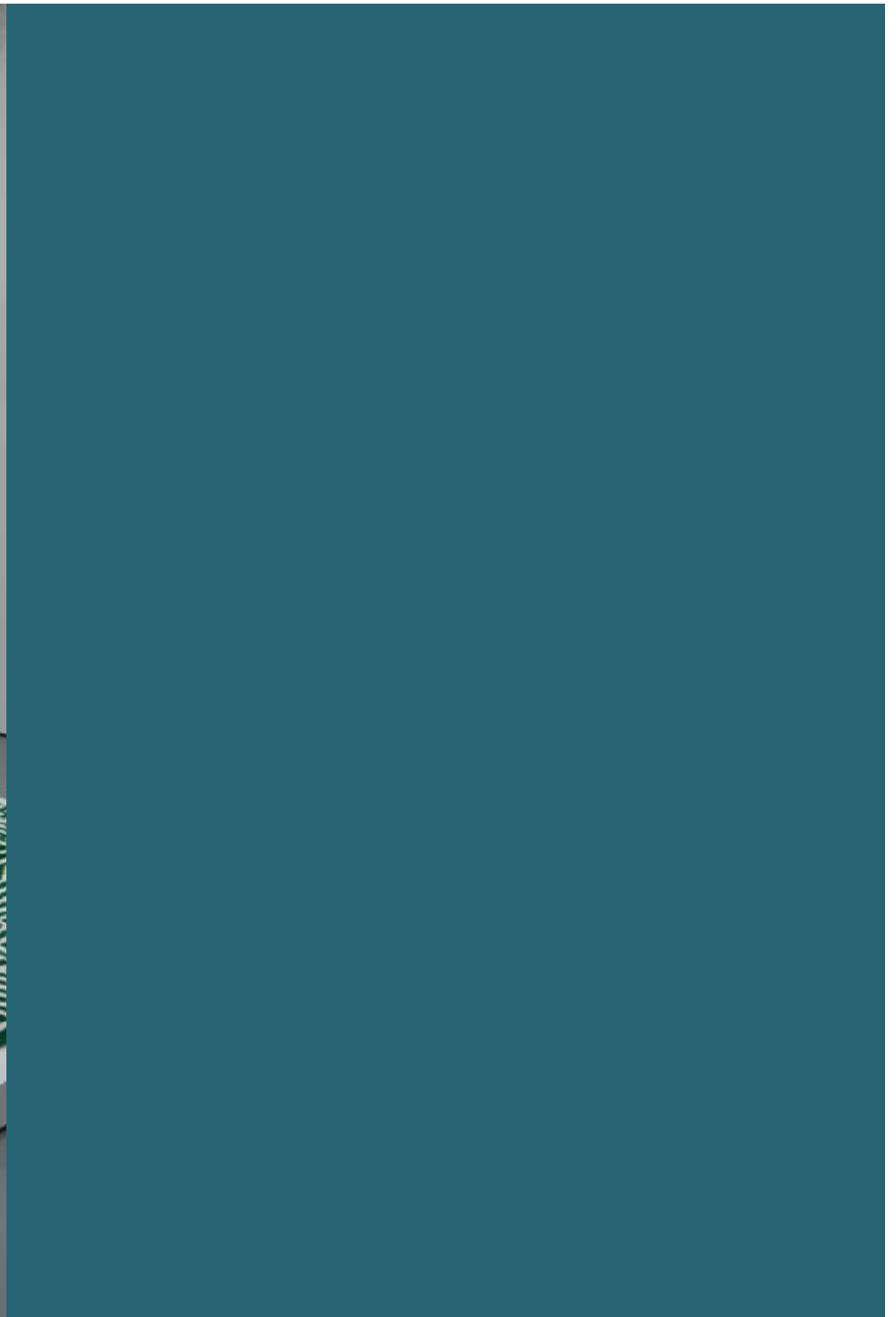
























The TextielLab of the  
TextielMuseum is a unique  
knowledge centre that is both a  
highly specialised workshop for  
producing fabrics as well as an  
open atelier where innovation can  
take centre stage.



Unique knowledge centre for  
(inter)national designers,  
architects and artists

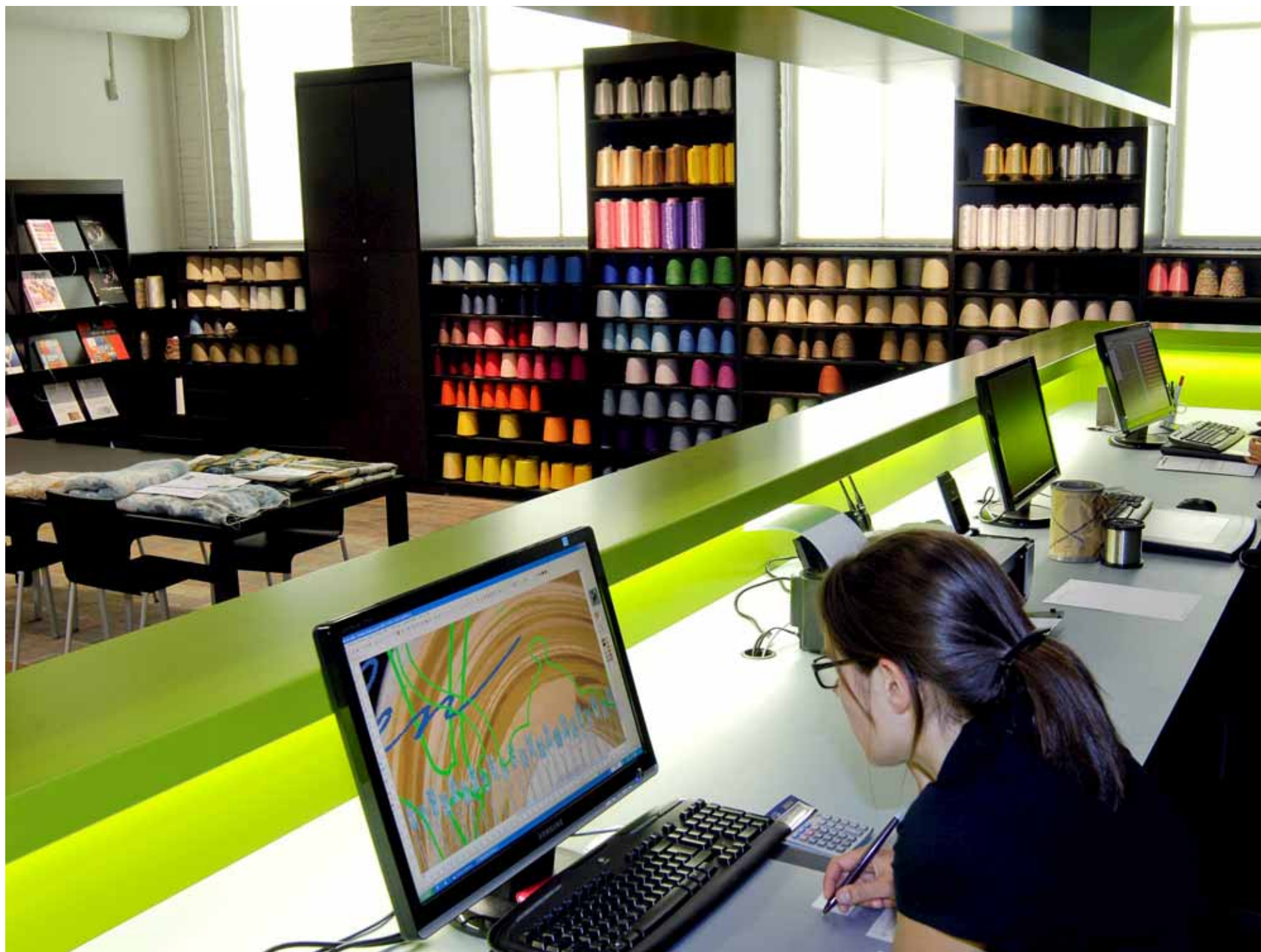
Expert creative and technical  
guidance in an open workshop

























Specialist workshop for fabrics

Computer-aided techniques  
alongside traditional crafts

# Weaving



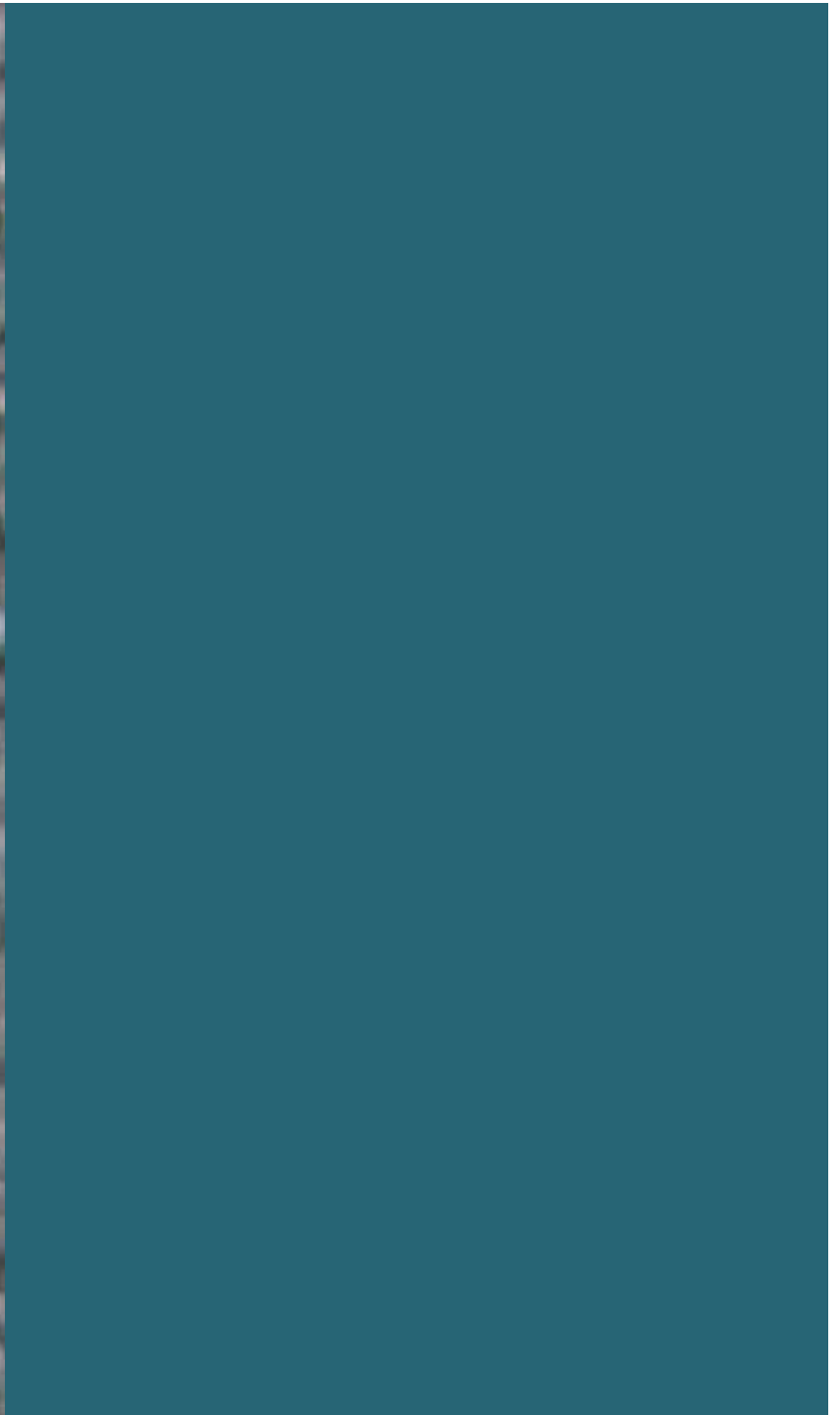
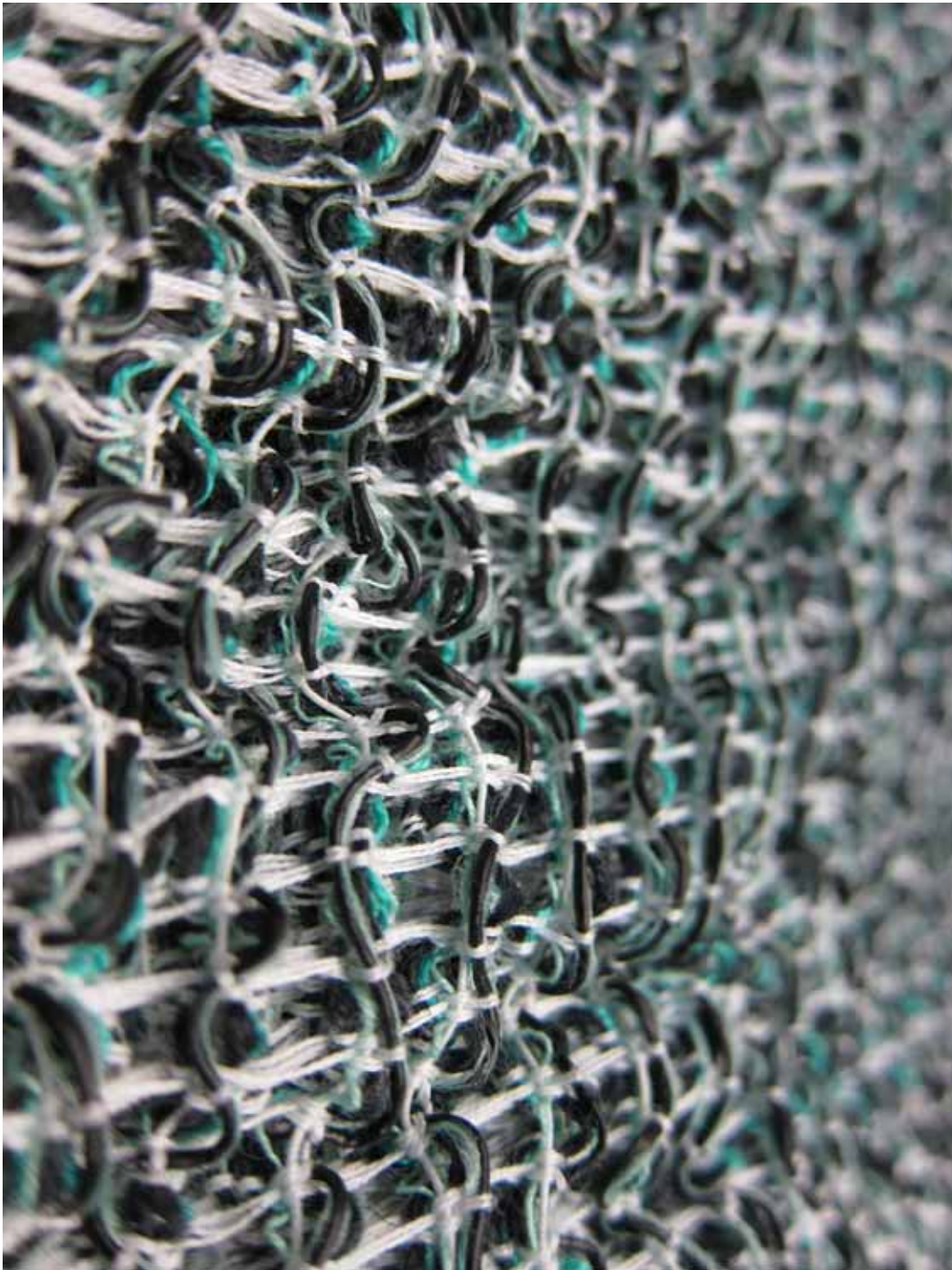
































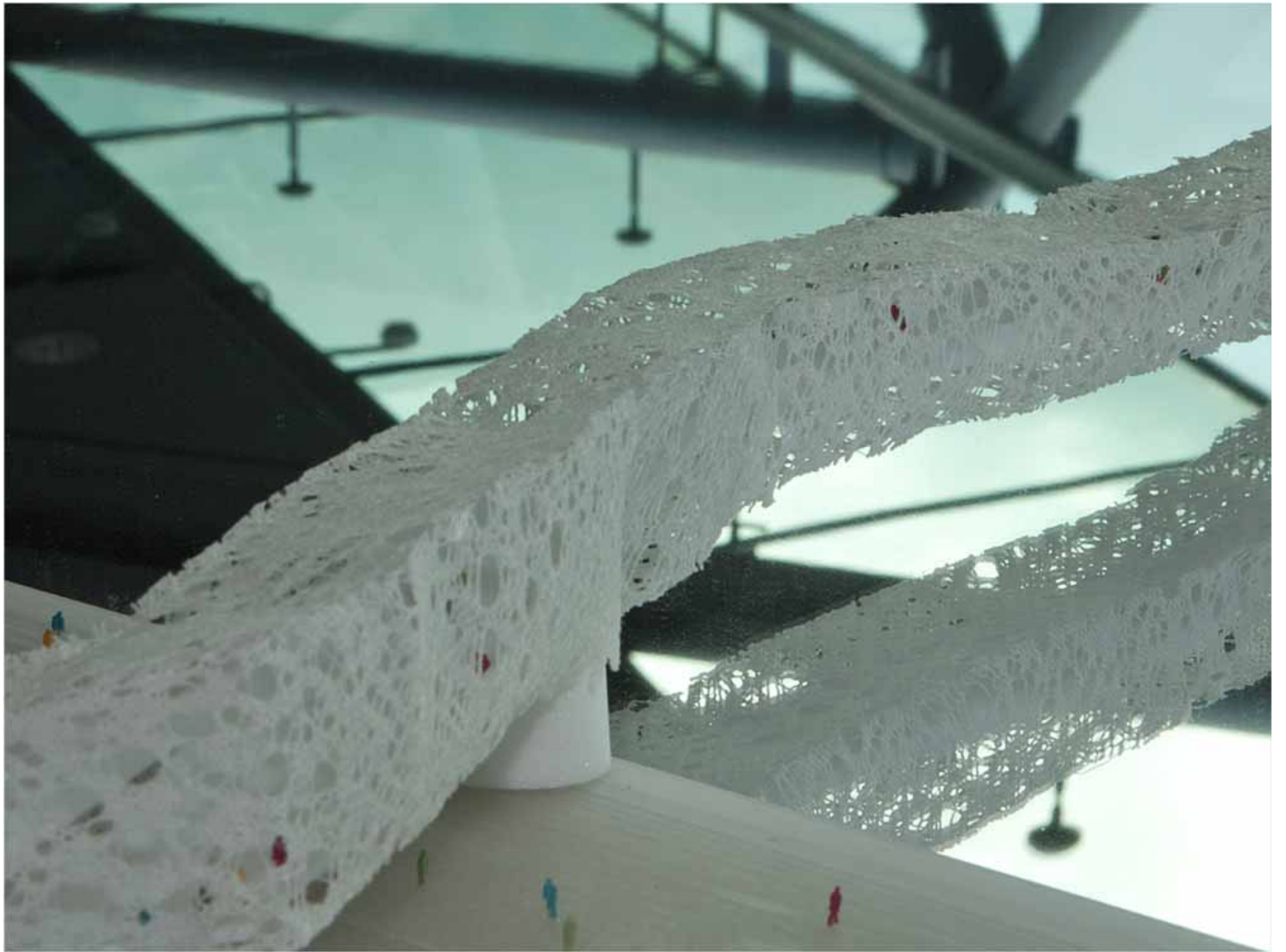
# Knitting



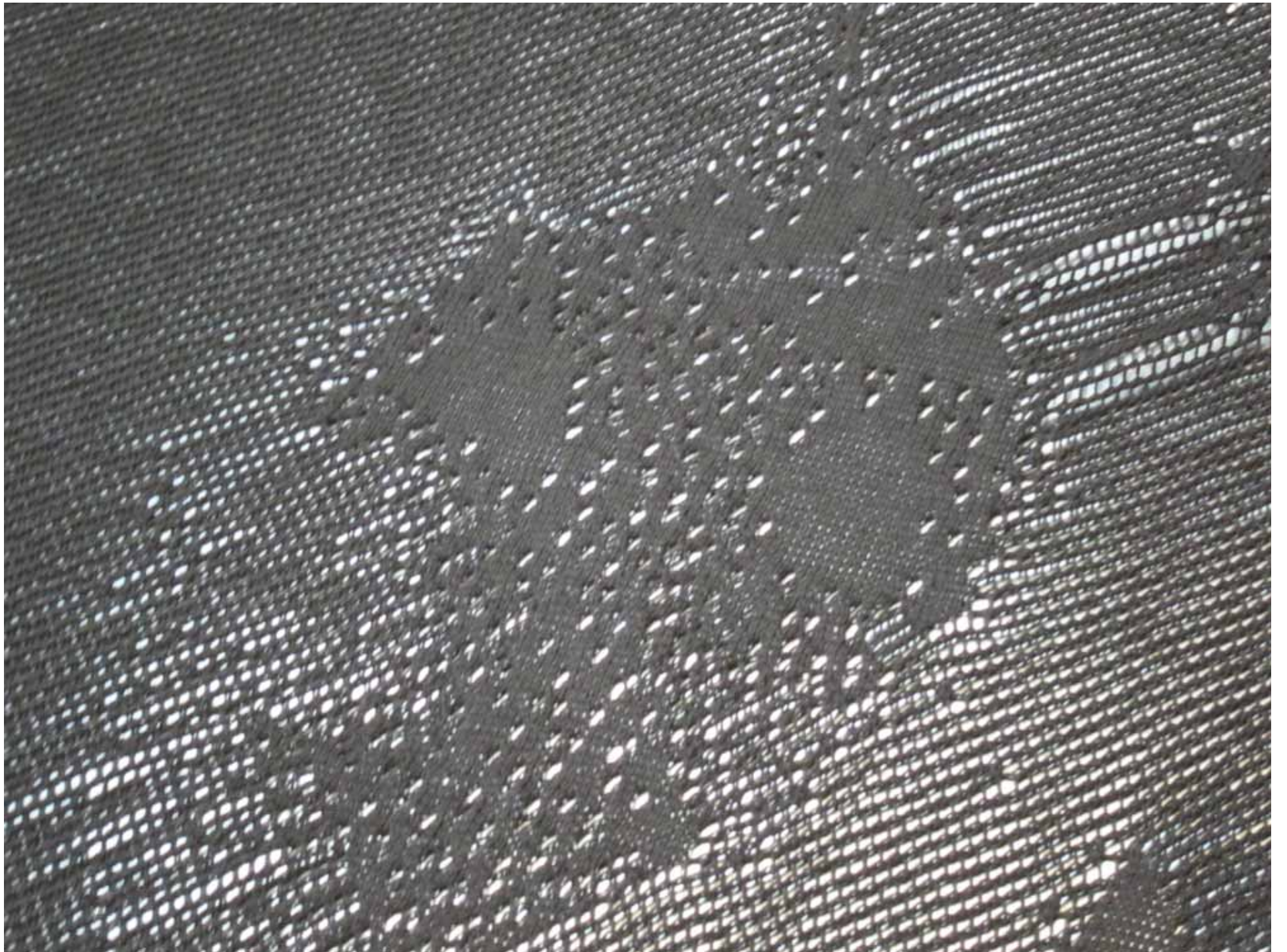














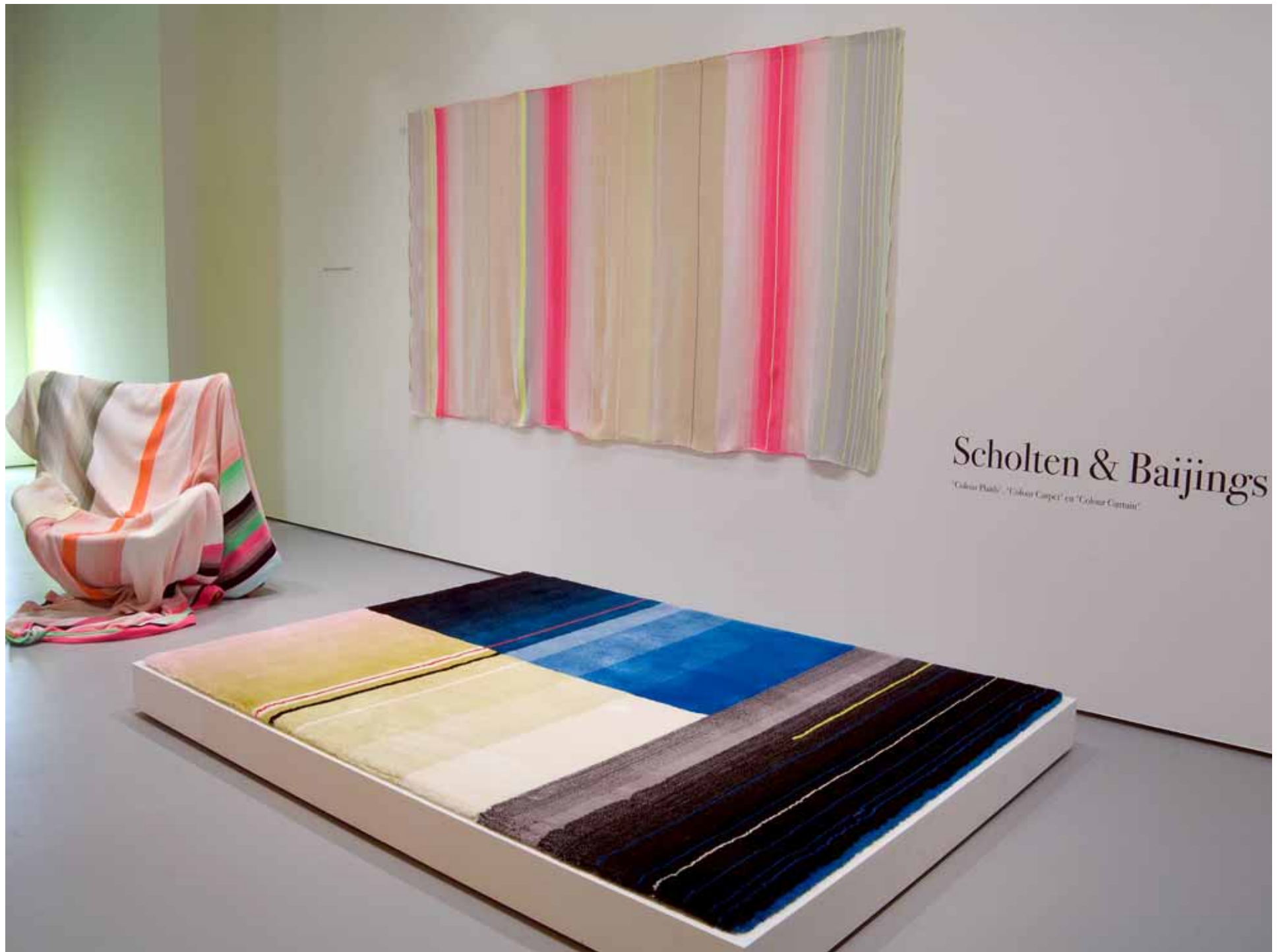








# Tufting



Scholten & Baijings

*"Colour Plaid", "Colour Carpet" en "Colour Curtain"*







Printing

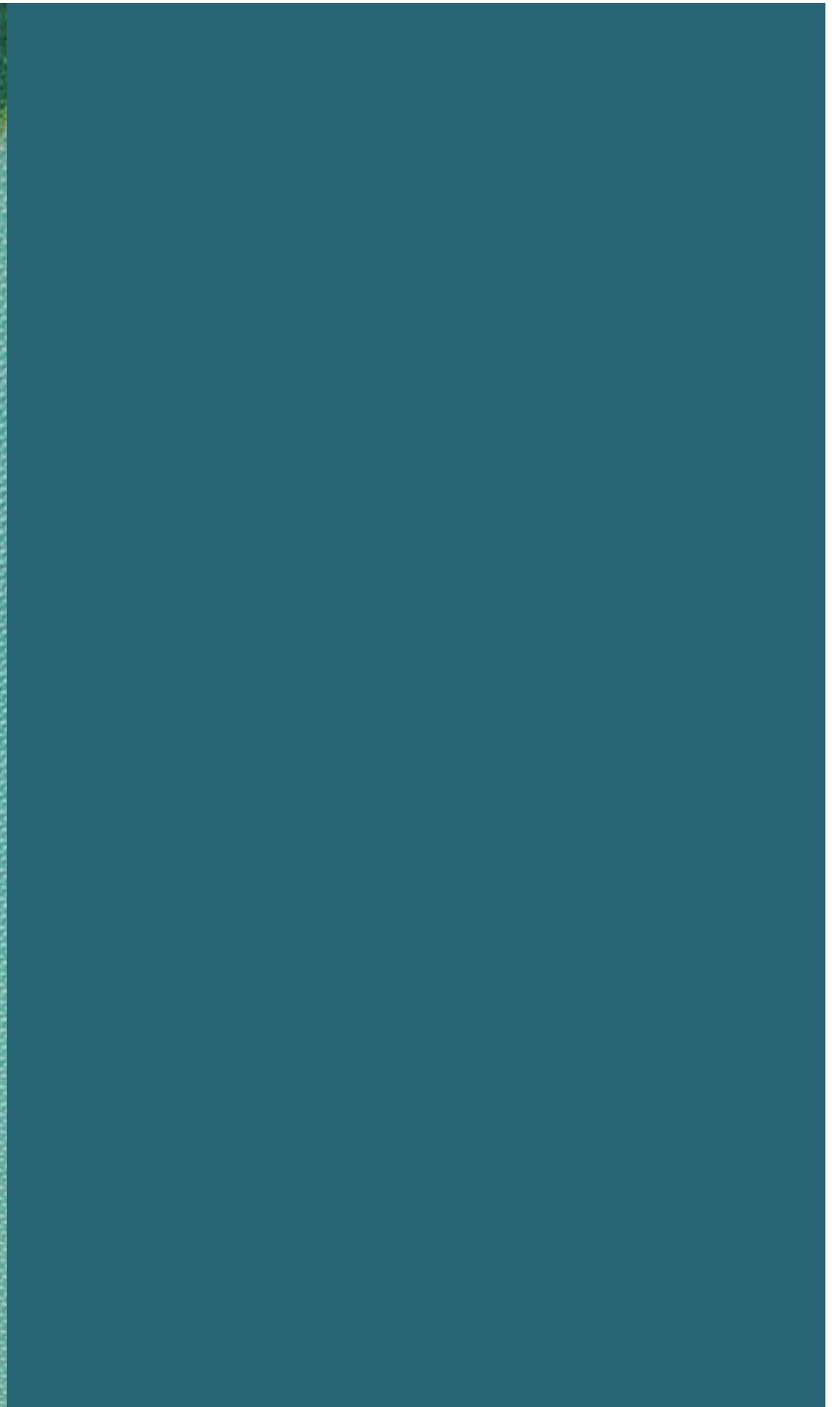






# Embroidery









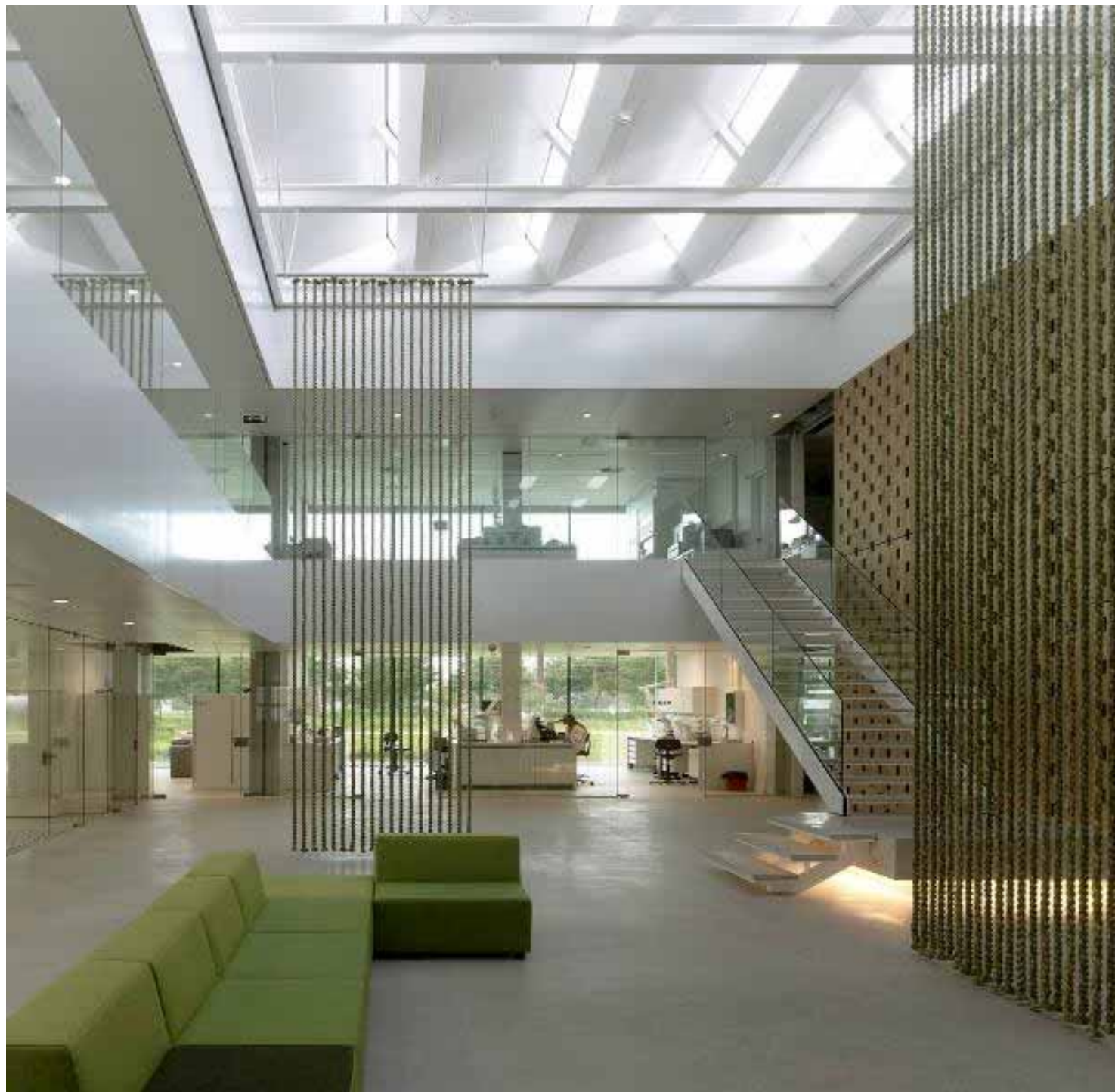
# Lasering





Passement















Yarn collection  
Samira Bloor

# 01

## GLOW IN THE DARK

**PROPERTIES**  
87% PET / 11% PV  
100% 10

Glow-in-the-dark yarns  
absorb light and store  
it so when it is dark  
they re-emit the light.  
The phosphorescent dye  
was added to the poly-  
ester. The yarn is white,  
giving off a green light in  
the dark for up to about  
two hours.

**CONTACT**  
Dore + Dore  
Rueschallee 21  
47546 Schwanheim  
Germany

[www.dore-dore.com](http://www.dore-dore.com)

# 02

## FELT

**PROPERTIES**  
37% extra-fine merino wool  
21% acrylic  
17% polyester  
1% elastane  
44 1/2/1000

During weaving, felt yarns  
shrink by some 20%  
giving the wool its own  
felt fabric & felt look. The  
resulting fabric is  
stronger and more  
compact.

**CONTACT**  
Dore + Dore  
Rueschallee 21  
47546 Schwanheim  
Germany

[www.dore-dore.com](http://www.dore-dore.com)





# Insert TextielLab Research & Development

The Industrious Heart of the TextielMuseum:  
The TextielLab

Investing in the Future

Man and Machine

Learning the Ropes

Infographics TextielLab





The extensive library, the museum collection and the temporary exhibitions are an excellent research and inspiration resource.





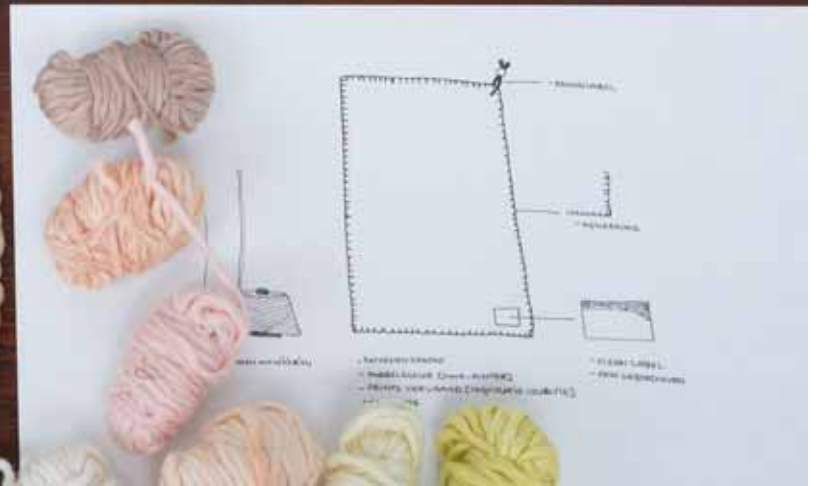


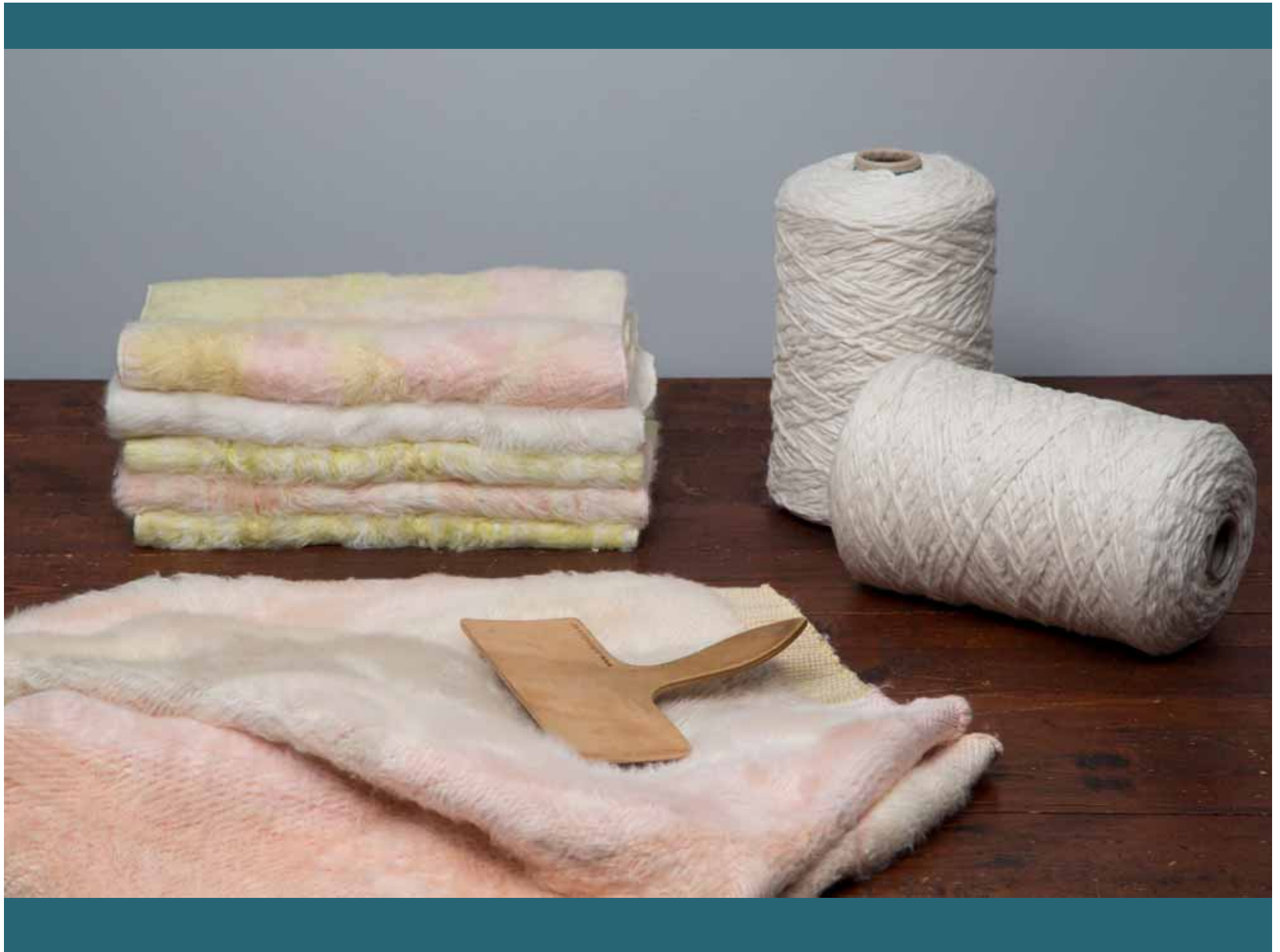
A few examples

# Turkish red & more: designers and the museum collection

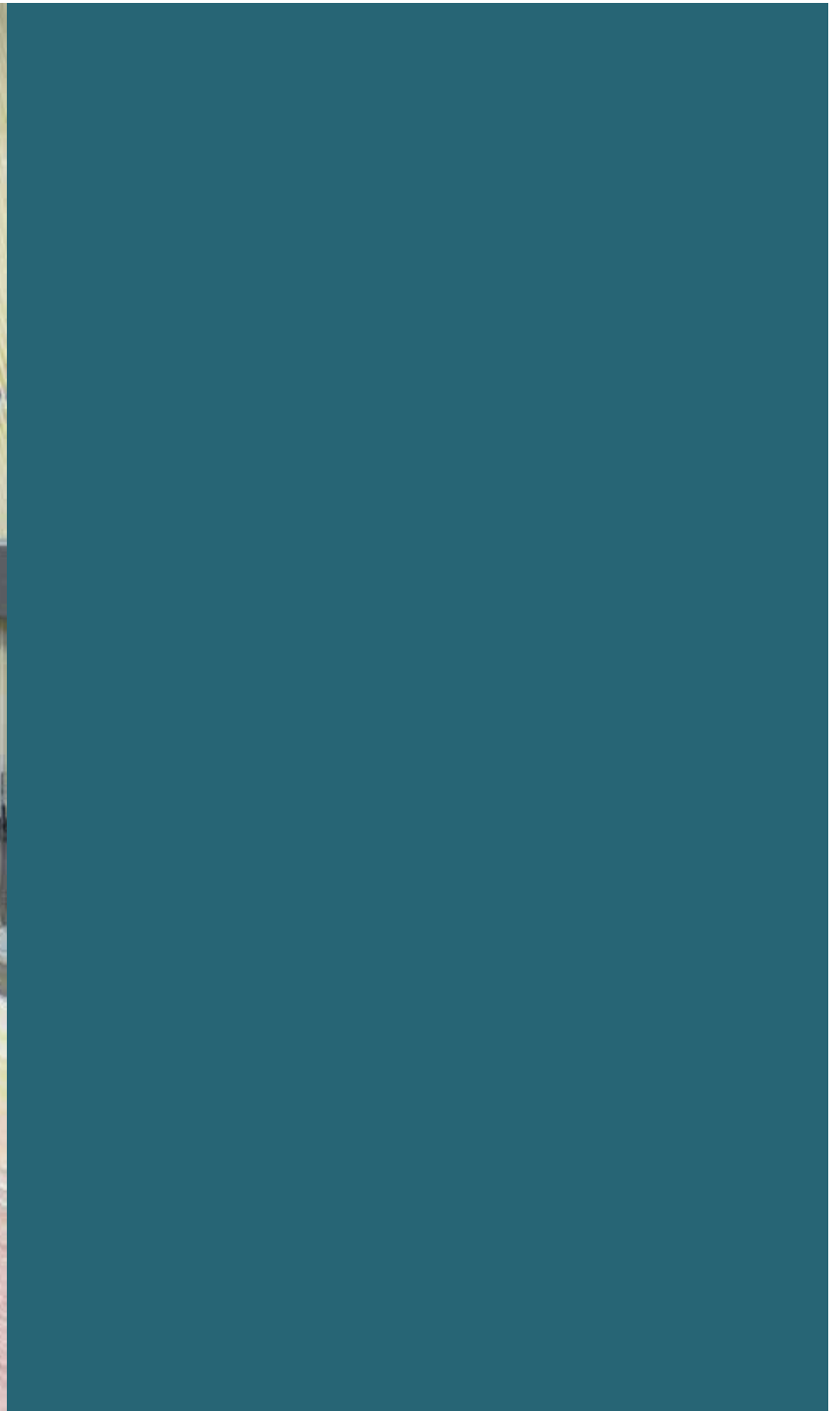






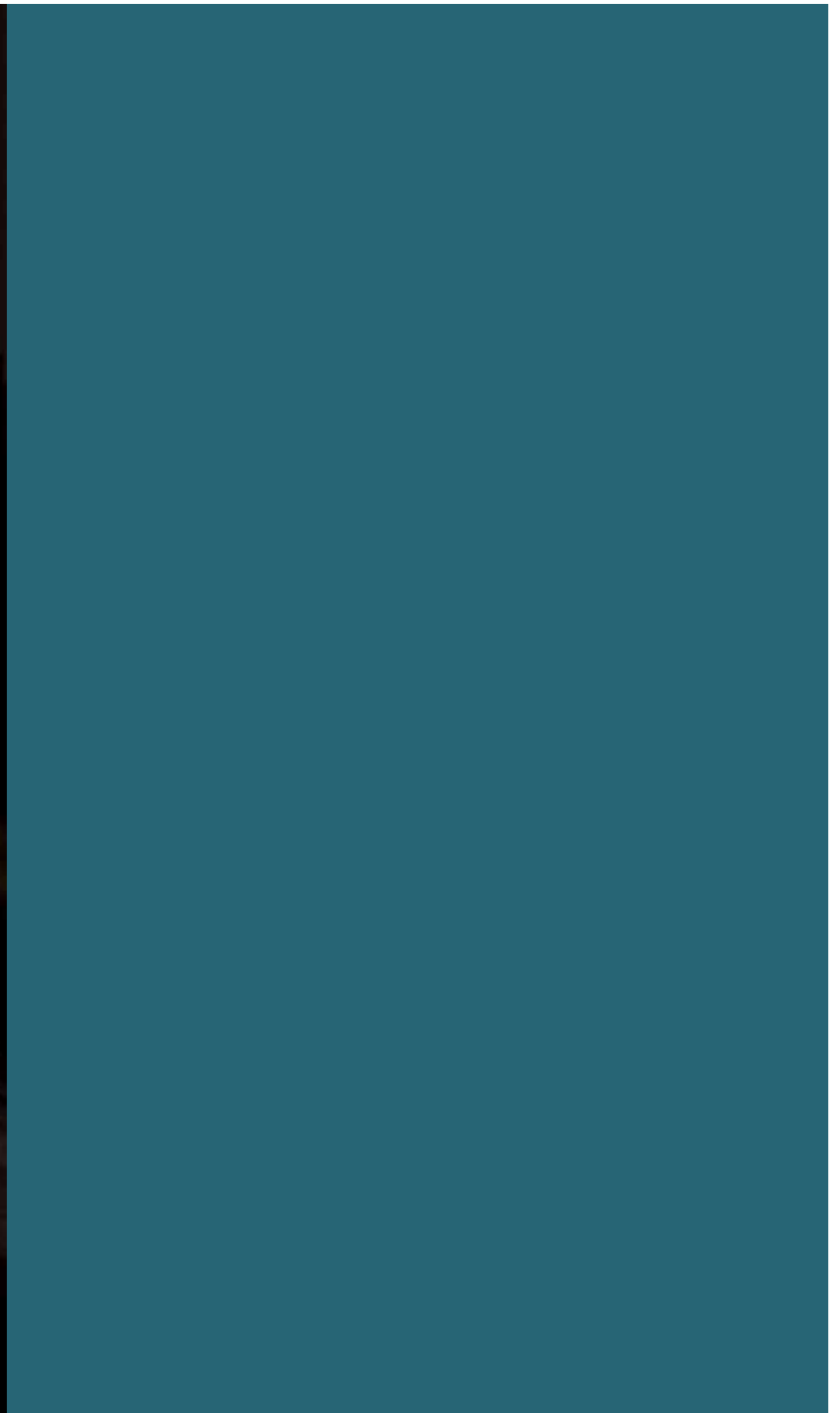












# Wool Diaries



TextielMuseum



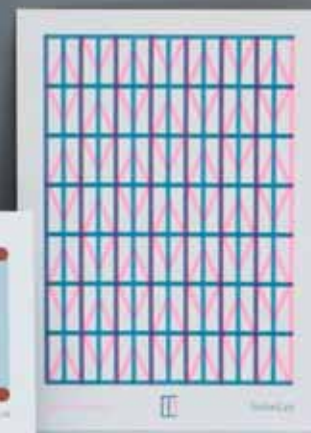
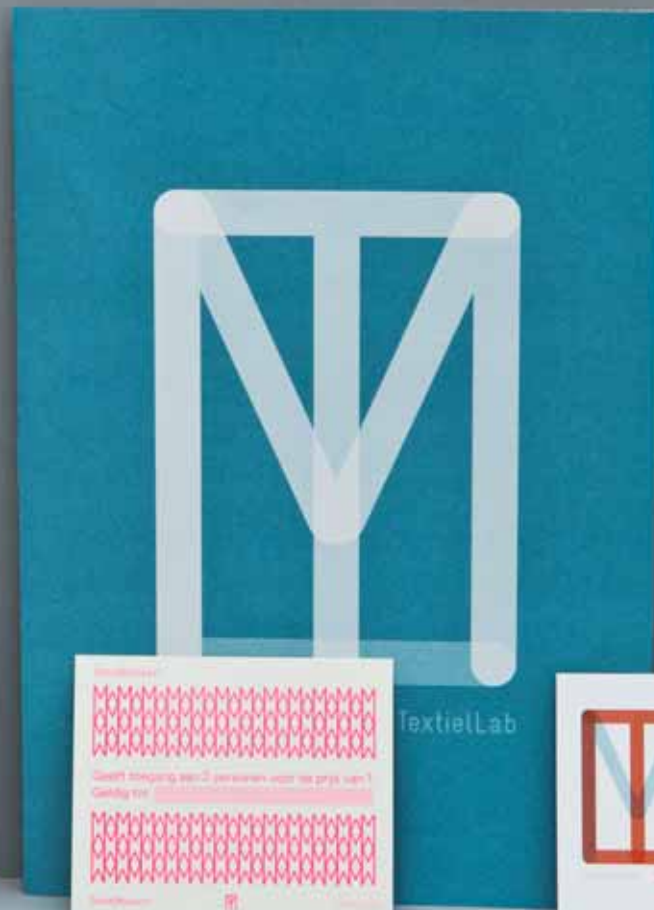
TextielLab

TextielMuseum



TextielLab











# Follow us

[facebook.com/textielmuseum.nl](https://facebook.com/textielmuseum.nl)

[twitter.com/textielmuseum](https://twitter.com/textielmuseum)

[scoop.it/t/textielmuseum](https://scoop.it/t/textielmuseum)

[youtube.com/user/textielmuseum](https://youtube.com/user/textielmuseum)

[www.textielmuseum.nl](https://www.textielmuseum.nl)