

# ★ DOCUMENTING ICH IN SOUND AND IMAGE ★

The Participatory Approach of Safeguarding Intangible Cultural Heritage (ICH)

## WHO DECIDES?

### WHICH INTANGIBLE HERITAGE ARE YOU DOCUMENTING?



### HOW TO DOCUMENT ICH?

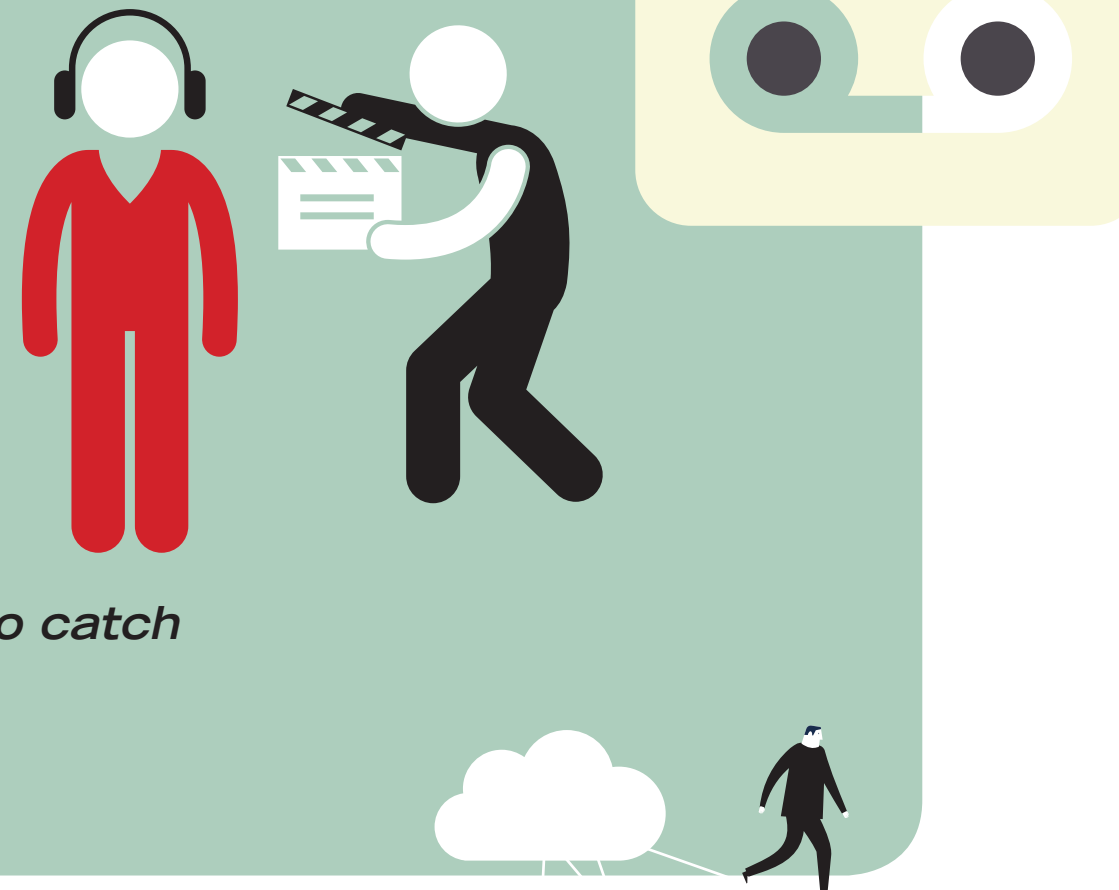
#### Participative

'Ensure the widest possible participation of communities, groups and, where appropriate, individuals' (Convention 2003)

#### Sound & Image

Documenting in sound and image seems one of the most appropriate ways to catch the specificity of the moving and dynamic human practices ICH consists of.

→ Participatory and community driven audiovisual documentation



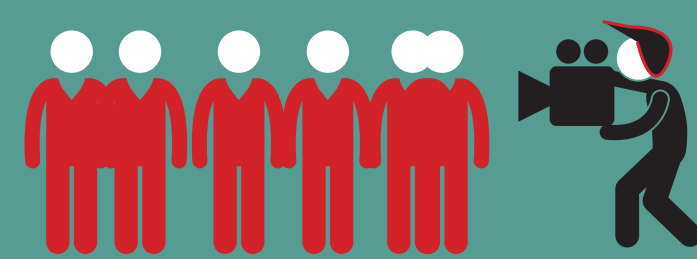
### NEW CHALLENGES FOR THE HERITAGE PROFESSIONAL:

#### DEMANDS

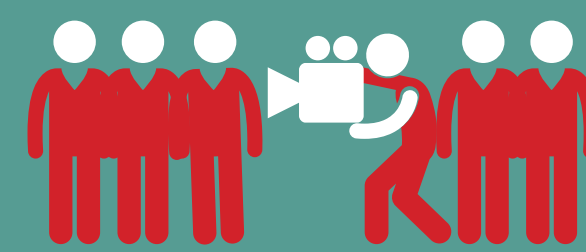
- an important **CHANGE** in **WORKING METHODS, ATTITUDES** and **MENTALITY**
- &
- the development of **EXPERIENCE** in **MOVING MEDIA**



### WHO DECIDES?



**documentation from the outside:**  
= external  
Focus on documentation of ICH as it appears, as an element or an event



**documentation from the inside:**  
= community-based  
Focus on documentation and the transmission of ICH as it is practised



**cooperation of 'outsiders' and 'insiders'**  
= participatory documentation  
Taking into account the priority of the perspective of the insider

→ The applied approach has obvious **EFFECTS** on the documentation process, choices and result

### HOW HAS ICH BEEN DOCUMENTED IN FLANDERS (BELGIUM)?

The applied methods so far are

#### Community-based participatory documentation

- Participatory photography
- Participatory video

source: [www.immaterieelerfgoed.be](http://www.immaterieelerfgoed.be)

#### External-based participatory documentation

- Artistic oriented projects / documentaries and observation, sometimes with the aim of transmitting ICH

### CONCLUSION

#### Documenting ICH ≅ visual anthropology and oral history

In the actual heritage practice, we notice that the documentation of ICH methodically shows resemblance and connection to the discipline of **visual anthropology** and the method of **oral history**. But although some cases in Flanders already explored and experimented the subject, a shared knowledge and reflection appears to be still in its infancy. The methodologies demand further **exploration, reflection, experimentation and expertise sharing** for a thorough participatory documentation of ICH with the aim of the safeguarding and transmission thereof.

#### CONTACT

tapis plein  
Centre of Expertise for Heritage Participation & Intangible Cultural Heritage (Flanders - Belgium).

tapis plein  
Sint-Jakobsstraat 36, 8000 Bruges  
032 (0)50 68 37 94  
Jorijn Neyrinck: [info@tapisplein.be](mailto:info@tapisplein.be)  
[www.tapisplein.be](http://www.tapisplein.be)

Ellen Janssens: [info@immaterieelerfgoed.be](mailto:info@immaterieelerfgoed.be)  
[www.immaterieelerfgoed.be](http://www.immaterieelerfgoed.be)



With the support of the Flemish Government and the city of Bruges



**Cross-disciplinary exchange expertise, cooperation and experiments!**

